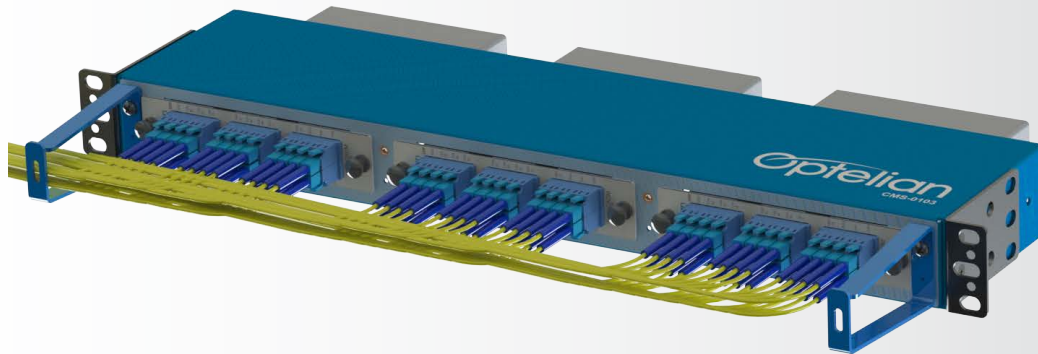




CMS Series

Passive Mounting Solutions

The Optelian CMS Mounting Solutions provide a variety of space-saving mounting options to suit any site requirement; from magnet- and wall-mount, to standard 19- and 23-inch racks. They are designed to house the complete set of LGX passive modules. All units are NEBS-compliant and are suitable for outside plant deployment. The CMS mounting solutions have flexible fiber management options. All units are shipped with mounting hardware and installation instructions.



CMS-110

The CMS-110 universal wall-mount bracket has integrated magnets for easy installation on a metal surface. It also has pre-drilled holes for wall-mounting on other surfaces. The CMS-110 holds two single-slot LGX modules or one double-slot LGX module.

CMS-0103

The CMS-0103 is a 1RU shelf that holds up to three single-slot LGX modules. The package includes universal brackets for mounting in 19-inch and 23-inch racks with front-mount and mid-mount positioning options. It also includes fiber management guides that can be easily installed in various configurations, both front and back. Additional options, such as sliding brackets and extra fiber guides, are also available.

CMS-0209

The CMS-0209 is a 2RU shelf that is designed to install in either a 19- or 23-inch rack. It can be front-mounted or mid-mounted for optimal positioning. The CMS-0209 supports up to nine single-slot LGX modules.

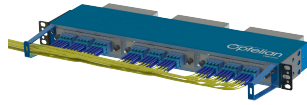
CMS-419 and CMS-423

The CMS-419 and CMS-423 are 4RU shelves that have integrated fiber management and rack-mount brackets. Both shelves have four triple-wide slots to house up to 12 single-slot or 4 triple-slot LGX modules, or a combination of single-slot, double-slot, and triple-slot LGX modules. The CMS-419 is designed to install in a standard 19-inch rack, and the CMS-423 is designed to install in a standard 23-inch rack.

CMS Series



CMS-110



CMS-0103



CMS-0209



CMS-419

Specifications

Wall and magnet mounting

Parameter	Description
CMS-110	
Dimensions (H x W x D)	132.5 x 65 x 163.5 mm (5.2 x 2.6 x 6.4 in.)
Capacity	2 single-slot LGX modules 1 double-slot LGX module
Weight (Empty)	0.23 kg (0.5 lb)

19-inch and 23-inch rack mounting

Parameter	Description
CMS-0103	
Dimensions (H x W x D)	43.7 x 439 x 105 mm (1.72 x 17.3 x 4.13 in.)
Capacity	3 single-slot LGX modules
Weight (Empty)	0.8 kg (1.75 lb)
CMS-0209	
Dimensions (H x W x D)	87.8 x 482.6 x 180 mm (3.46 x 19 x 7.08 in.)
Capacity	9 single-slot LGX modules
Weight (Empty)	2.1 kg (4.65 lb) without brackets 2.4 kg (5.35 lb) with brackets

19-inch rack mounting

Parameter	Description
CMS-419	
Dimensions (H x W x D)	177 x 482.6 x 148 mm (6.97 x 19 x 5.8 in.)
Capacity	12 single-slot LGX modules 4 triple-slot LGX modules Combination of single-, double-, and triple-slot LGX modules
Weight (Empty)	3.6 kg (8 lb)

Specifications

23-inch rack mounting

Parameter	Description
CMS-423	
Dimensions (H x W x D)	177 x 584.2 x 148 mm (6.97 x 23 x 5.8 in.)
Capacity	12 single-slot LGX modules 4 triple-slot LGX modules Combination of single-, double-, and triple-slot LGX modules
Weight (Empty)	4.1 kg (9 lb)

Ordering Information

Part Number	Description
1000-9810	CMS-110, wall bracket, 2 LGX
1022-0103	CMS-0103, 1RU 19-inch/23-inch shelf, 3 LGX
1022-0209	CMS-0209, 2RU 19-inch shelf, 9 LGX
1001-0500	CMS-419, 4RU 19-inch shelf, 12 LGX
1001-0600	CMS-423, 4RU 23-inch shelf, 12 LGX
1022-0108	Optional extra fiber management guides, CMS-0103
1022-0106	Optional slider mount bracket pair, CMS-0103, 19-inch rack
1022-0107	Optional slider mount bracket pair, CMS-0103, 23-inch rack

UNITED STATES

1700 Enterprise Way, SE, Ste. 101
Marietta, GA 30067-9219
T: +1 877 225 9428
T: +1 770 690 9575

CANADA

1 Brewer Hunt Way
Ottawa, Ontario K2K 2B5
T: +1 613 287 2000
sales@optelian.com



optelian.com